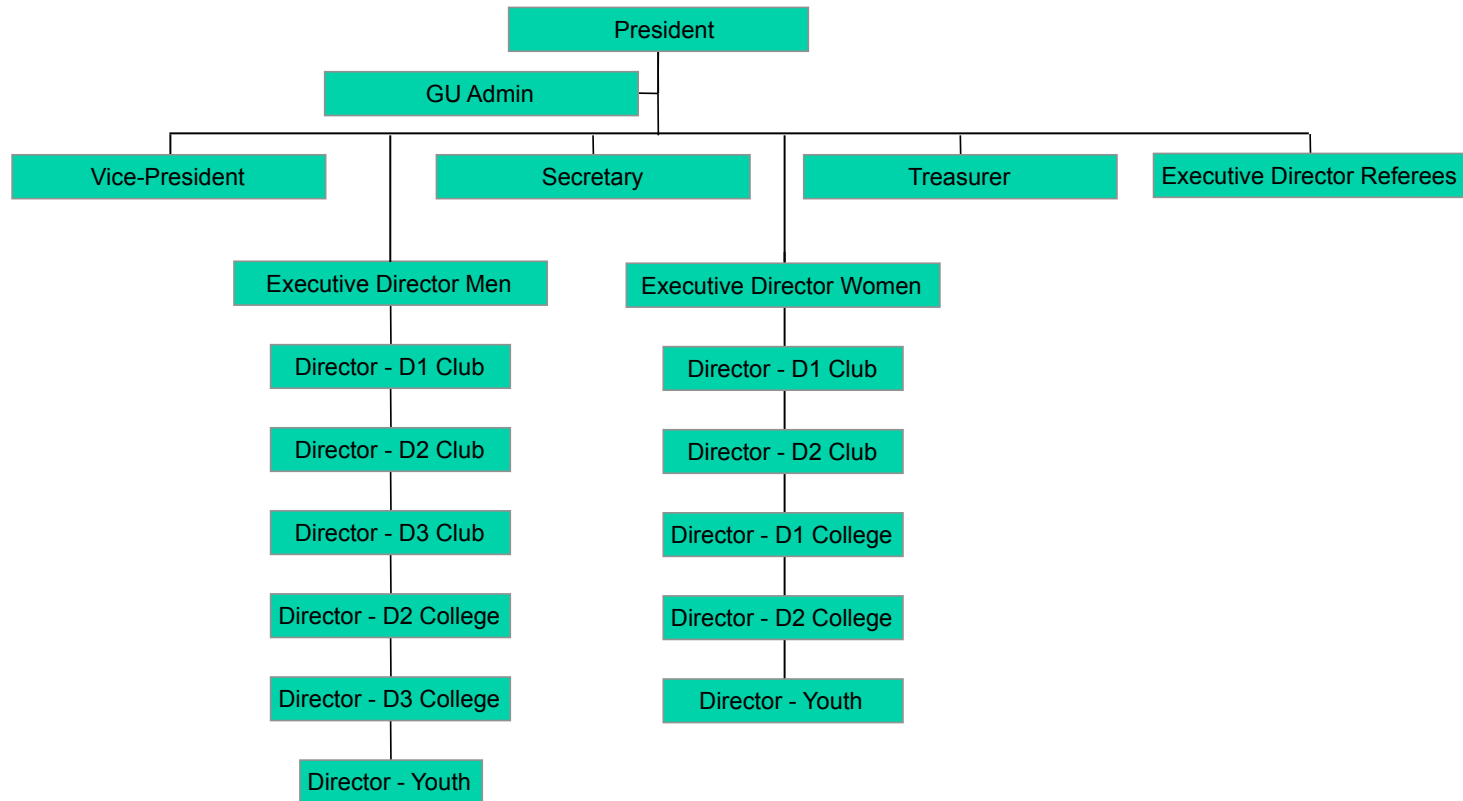


Geographical Union Organization Structure



GU Representation

- Each GU Executive Committee shall have a President, Vice-President, Secretary, Treasurer, and three voting Executive Directors
- Each GU shall have at least one Executive Director representing Women, Men, & Referees
- Each GU shall appoint a non-voting Director for each competitive division* within its GU. Directors shall report to their respective Executive Director based on gender.

* A competitive division is defined as a minimum of 5 competitive clubs in good standing with men and women's clubs counted as separate divisions.